

## 2 PCE LOCKING BALL VALVE



### PRODUCT INFORMATION

**Brand Name:** Hendoflow

**Body Material:** CF8M (316)

**Seat:** PTFE

**Connection:** BSP

**Pressure Rating:** 1000 psi

**Suitable Mediums:** Water, Oil & Gas

*\*Also available in NPT Ends*

Part Number	Product Size
293-006	1/4" (8mm)
293-010	3/8" (10mm)
293-015	1/2" (15mm)
293-020	3/4" (20mm)
293-025	1" (25mm)
293-032	1¼" (32mm)
293-040	1½" (40mm)
293-050	2" (50mm)
293-065	2½" (65mm)
293-080	3" (80mm)
293-100	4" (100mm)

## 1 PCE REDUCED BORE BALL VALVE

### PRODUCT INFORMATION

<b>Brand Name:</b>	Hendoflow
<b>Body Material:</b>	CF8M (316)
<b>Seat:</b>	PTFE
<b>Connection:</b>	BSP
<b>Pressure Rating:</b>	1000 psi
<b>Suitable Mediums:</b>	Water, Oil & Gas



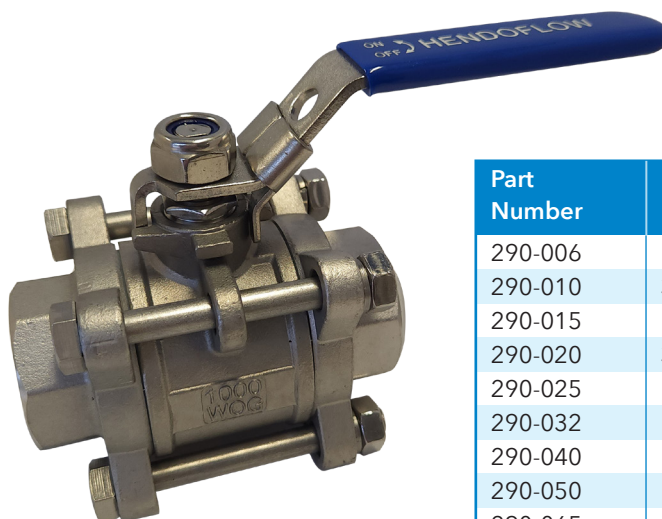
Part Number	Product Size
291-006	1/4" (8mm)
291-010	3/8" (10mm)
291-015	1/2" (15mm)
291-020	3/4" (20mm)
291-025	1" (25mm)
291-032	1¼" (32mm)
291-040	1½" (40mm)
291-050	2" (50mm)

## 3 PCE LOCKING BALL VALVE

### PRODUCT INFORMATION

<b>Brand Name:</b>	Hendoflow
<b>Body Material:</b>	CF8M (316)
<b>Seat:</b>	PTFE
<b>Connection:</b>	BSP
<b>Pressure Rating:</b>	1000 psi
<b>Suitable Mediums:</b>	Water, Oil & Gas

*\*Also available in NPT Ends*



Part Number	Product Size
290-006	1/4" (8mm)
290-010	3/8" (10mm)
290-015	1/2" (15mm)
290-020	3/4" (20mm)
290-025	1" (25mm)
290-032	1¼" (32mm)
290-040	1½" (40mm)
290-050	2" (50mm)
290-065	2½" (65mm)
290-080	3" (80mm)
290-100	4" (100mm)

## 3-PCE SPRING CHECK VALVE

### PRODUCT INFORMATION

<b>Brand Name:</b>	Arita
<b>Body Material:</b>	ASTM A351 CF8M
<b>Seat:</b>	PTFE
<b>Connection:</b>	BSP
<b>Pressure Rating:</b>	1000 psi
<b>Suitable Mediums:</b>	Water, Oil & Gas



Part Number	Product Size
294-006	1/4" (8mm)
294-010	3/8" (10mm)
294-015	1/2" (15mm)
294-020	3/4" (20mm)
294-025	1" (25mm)
294-032	1¼" (32mm)
294-040	1½" (40mm)
294-050	2" (50mm)
294-065	2½" (65mm)
294-080	3" (80mm)
294-100	4" (100mm)

*\*Also available in NPT Ends*

## 2-PCE SPRING CHECK VALVE

### PRODUCT INFORMATION

<b>Brand Name:</b>	Arita
<b>Body Material:</b>	ASTM A351 CF8M
<b>Seat:</b>	PTFE
<b>Connection:</b>	BSP
<b>Pressure Rating:</b>	200 psi
<b>Suitable Mediums:</b>	Water, Oil & Gas



Part Number	Product Size
300-006	1/4" (8mm)
300-010	3/8" (10mm)
300-015	1/2" (15mm)
300-020	3/4" (20mm)
300-025	1" (25mm)
300-032	1¼" (32mm)
300-040	1½" (40mm)
300-050	2" (50mm)

## SWING CHECK VALVE

### PRODUCT INFORMATION

<b>Brand Name:</b>	Arita
<b>Body Material:</b>	ASTM A351 CF8M
<b>Seat:</b>	PTFE
<b>Connection:</b>	BSP
<b>Pressure Rating:</b>	200 psi
<b>Suitable Mediums:</b>	Water, Oil & Gas
<b>Port Size:</b>	Full Bore



Part Number	Product Size
292-015	1/2" (15mm)
292-020	3/4" (20mm)
292-025	1" (25mm)
292-032	1¼" (32mm)
292-040	1½" (40mm)
292-050	2" (50mm)
292-065	2½" (65mm)
292-080	3" (80mm)

## Y-STRAINER

### PRODUCT INFORMATION

<b>Brand Name:</b>	Arita
<b>Body Material:</b>	ASTM A351 CF8M
<b>Connection:</b>	BSP
<b>Pressure Rating:</b>	800 psi



Part Number	Product Size
295-006	1/4" (8mm)
295-010	3/8" (10mm)
295-015	1/2" (15mm)
295-020	3/4" (20mm)
295-025	1" (25mm)
295-032	1¼" (32mm)
295-040	1½" (40mm)
295-050	2" (50mm)
295-065	2½" (65mm)
295-080	3" (80mm)

*\*Also available in NPT Ends, Flanged SS, CS & CI*

## GATE VALVE

### PRODUCT INFORMATION

<b>Brand Name:</b>	Arita
<b>Body Material:</b>	ASTM A351 CF8M
<b>Seat:</b>	PTFE
<b>Connection:</b>	BSP
<b>Pressure Rating:</b>	200 psi
<b>Suitable Mediums:</b>	Water, Oil & Gas
<b>Port Size:</b>	Full Bore



Part Number	Product Size
299-015	1/2" (15mm)
299-020	3/4" (20mm)
299-025	1" (25mm)
299-032	1 1/4" (32mm)
299-040	1 1/2" (40mm)
299-050	2" (50mm)
299-065	2 1/2" (65mm)
299-080	3" (80mm)

## GLOBE VALVE

### PRODUCT INFORMATION

<b>Brand Name:</b>	Arita
<b>Body Material:</b>	ASTM A351 CF8M
<b>Seat:</b>	PTFE
<b>Connection:</b>	BSP
<b>Pressure Rating:</b>	200 psi
<b>Suitable Mediums:</b>	Water, Oil & Gas
<b>Port Size:</b>	Full Bore



Part Number	Product Size
298-015	1/2" (15mm)
298-020	3/4" (20mm)
298-025	1" (25mm)
298-032	1 1/4" (32mm)
298-040	1 1/2" (40mm)
298-050	2" (50mm)
298-065	2 1/2" (65mm)
298-080	3" (80mm)

## L-PORT 3 WAY BALL VALVE



### PRODUCT INFORMATION

<b>Brand Name:</b>	Arita
<b>Body Material:</b>	ASTM A351 CF8M
<b>Seat:</b>	PTFE
<b>Connection:</b>	BSP
<b>Pressure Rating:</b>	1000 psi
<b>Suitable Mediums:</b>	Water, Oil & Gas

Part Number	Product Size
296-LS006	1/4" (8mm)
296-LS010	3/8" (10mm)
296-LS015	1/2" (15mm)
296-LS020	3/4" (20mm)
296-LS025	1" (25mm)
296-LS032	1¼" (32mm)
296-LS040	1½" (40mm)
296-LS050	2" (50mm)

## T-PORT 3 WAY BALL VALVE



### PRODUCT INFORMATION

<b>Brand Name:</b>	Arita
<b>Body Material:</b>	ASTM A351 CF8M
<b>Seat:</b>	PTFE
<b>Connection:</b>	BSP
<b>Pressure Rating:</b>	1000 psi
<b>Suitable Mediums:</b>	Water, Oil & Gas

Part Number	Product Size
296-TS006	1/4" (8mm)
296-TS010	3/8" (10mm)
296-TS015	1/2" (15mm)
296-TS020	3/4" (20mm)
296-TS025	1" (25mm)
296-TS032	1¼" (32mm)
296-TS040	1½" (40mm)
296-TS050	2" (50mm)

## L-PORT 3 WAY BOTTOM ENTRY BALL VALVE

### PRODUCT INFORMATION

**Body Material:** CF8M (316)

**Seat:** PTFE

**Connection:** BSP

**Pressure Rating:** 1000 psi

**Suitable Mediums:** Water, Oil & Gas



Part Number	Product Size
296-LB006	1/4" (8mm)
296-LB010	3/8" (10mm)
296-LB015	1/2" (15mm)
296-LB020	3/4" (20mm)
296-LB025	1" (25mm)
296-LB032	1¼" (32mm)
296-LB038	1½" (38mm)
296-LB050	2" (50mm)
296-LB080	3" (80mm)

## T-PORT 3 WAY BOTTOM ENTRY BALL VALVE

### PRODUCT INFORMATION

**Body Material:** CF8M (316)

**Seat:** PTFE

**Connection:** BSP

**Pressure Rating:** 1000 psi

**Suitable Mediums:** Water, Oil & Gas

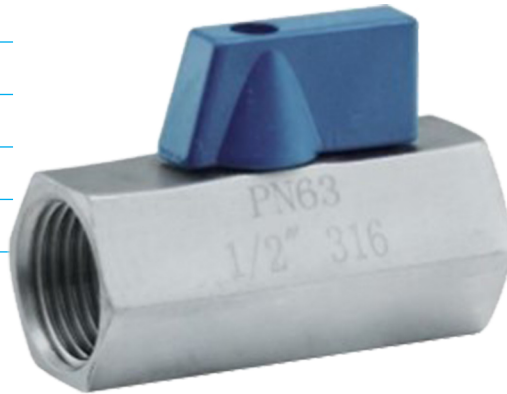


Part Number	Product Size
296-TB006	1/4" (8mm)
296-TB010	3/8" (10mm)
296-TB015	1/2" (15mm)
296-TB020	3/4" (20mm)
296-TB025	1" (25mm)
296-TB032	1¼" (32mm)
296-TB038	1½" (38mm)
296-TB050	2" (50mm)
296-TB080	3" (80mm)

## FF MINI BALL VALVE

### PRODUCT INFORMATION

<b>Brand Name:</b>	Arita
<b>Body Material:</b>	ASTM A351 CF8M
<b>Connection:</b>	BSP
<b>Pressure Rating:</b>	1000 psi



Part Number	Product Size
S220-006	1/4" (8mm)
S220-010	3/8" (10mm)
S220-015	1/2" (15mm)
S220-020	3/4" (20mm)
S220-025	1" (25mm)

## MF MINI BALL VALVE

### PRODUCT INFORMATION

<b>Brand Name:</b>	Arita
<b>Body Material:</b>	ASTM A351 CF8M
<b>Connection:</b>	BSP
<b>Pressure Rating:</b>	1000 psi



Part Number	Product Size
S221-006	1/4" (8mm)
S221-010	3/8" (10mm)
S221-015	1/2" (15mm)
S221-020	3/4" (20mm)
S221-025	1" (25mm)



## SPRING LOADED QUICK ACTION GATE VALVE

### PRODUCT INFORMATION

**Body Material:** CF8M (316)

**Connection:** BSP

Part Number	Product Size
296-015	1/2" (15mm)
296-020	3/4" (20mm)



## SPRING LOADED DEADMAN VALVE

### PRODUCT INFORMATION

**Body Material:** CF8M (316)

**Connection:** BSP

**Pressure Rating:** 2000 psi

Part Number	Product Size
289-006	1/4" (8mm)
289-010	3/8" (10mm)
289-015	1/2" (15mm)
289-020	3/4" (20mm)
289-025	1" (25mm)
289-032	1¼" (32mm)
289-040	1½" (40mm)
289-050	2" (50mm)

