

Type A



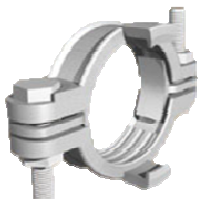
| | Male BSP |
|------|----------|
| 1/2" | 800-AM15 |
| 3/4" | 800-AM20 |
| 1" | 800-AM25 |



| | Female BSP |
|------|------------|
| 1/2" | 800-AF15 |
| 3/4" | 800-AF20 |
| 1" | 800-AF25 |



| | Hosetail |
|------|----------|
| 1/2" | 800-AT15 |
| 3/4" | 800-AT20 |
| 1" | 800-AT25 |



| | Clamp |
|--------|----------|
| 1/2" | 800-CC15 |
| 3/4" | 800-CC20 |
| 1" | 800-CC25 |
| 1-1/4" | 800-CC32 |
| 1-1/2" | 800-CC38 |
| 2" | 800-CC50 |



| | 3 Way |
|----------|---------|
| Type A | 800-A3W |
| Surelock | 800-S3W |

Surelock

| | Male BSP |
|--------|----------|
| 1/2" | 800-SM15 |
| 3/4" | 800-SM20 |
| 1" | 800-SM25 |
| 1-1/4" | 800-SM32 |
| 1-1/2" | 800-SM38 |
| 2" | 800-SM50 |

| | Female BSP |
|--------|------------|
| 1/2" | 800-SF15 |
| 3/4" | 800-SF20 |
| 1" | 800-SF25 |
| 1-1/4" | 800-SF32 |
| 1-1/2" | 800-SF38 |
| 2" | 800-SF50 |

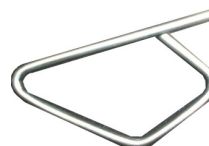
| | Hosetail |
|--------|----------|
| 1/2" | 800-ST15 |
| 3/4" | 800-ST20 |
| 1" | 800-ST25 |
| 1-1/4" | 800-ST32 |
| 1-1/2" | 800-ST38 |
| 2" | 800-ST50 |



| | Seal |
|-------|--------|
| 12-25 | 800-AS |
| 25-50 | 800-SS |



| | Blank |
|-------|--------|
| 12-25 | 800-AS |
| 25-50 | 800-SS |



| | Locking Pin |
|--|-------------|
| | 800-LP |

Stainless Steel available on request

Nitto Coupling



| Product Code | Size | Nitto # |
|--------------|---------------|---------|
| FNC-4F | 1/4" FBSP | 20SF |
| FNC-6F | 3/8" FBSP | 30SF |
| FNC-8F | 1/2" FBSP | 40SF |
| FNC-4M | 1/4" MBSP | 20SM |
| FNC-6M | 3/8" MBSP | 30SM |
| FNC-8M | 1/2" MBSP | 40SM |
| FNC-4T | 1/4" Hosetail | 20SH |
| FNC-6T | 3/8" Hosetail | 30SH |
| FNC-8T | 1/2" Hosetail | 40SH |



Nitto Adaptor



| Product Code | Size | Nitto # |
|--------------|---------------|---------|
| FNA-4F | 1/4" FBSP | 20PF |
| FNA-6F | 3/8" FBSP | 30PF |
| FNA-8F | 1/2" FBSP | 40PF |
| FNA-4M | 1/4" MBSP | 20PM |
| FNA-6M | 3/8" MBSP | 30PM |
| FNA-8M | 1/2" MBSP | 40PM |
| FNA-4T | 1/4" Hosetail | 20PH |
| FNA-6T | 3/8" Hosetail | 30PH |
| FNA-8T | 1/2" Hosetail | 40PH |
| FNA-4MR | 1/4" MBSP | RL-20PM |
| FNA-6MR | 3/8" MBSP | RL-30PM |
| FNA-4MT | 1/4" MBSP | TS-20PM |
| FNA-6MT | 3/8" MBSP | TS-30PM |
| FNA-4FT | 1/4" FBSP | TS-20PF |



*Quality
Is NOT
Interchangeable!*

Nitto Locking Coupling



| Product Code | Size | Nitto # |
|--------------|---------------|-----------|
| FNC-4FL | 1/4" FBSP | L200-20SF |
| FNC-6FL | 3/8" FBSP | L200-30SF |
| FNC-8FL | 1/2" FBSP | L200-40SF |
| FNC-4ML | 1/4" MBSP | L200-20SM |
| FNC-6ML | 3/8" MBSP | L200-30SM |
| FNC-8ML | 1/2" MBSP | L200-40SM |
| FNC-4TL | 1/4" Hosetail | L200-20SH |
| FNC-6TL | 3/8" Hosetail | L200-30SH |
| FNC-8TL | 1/2" Hosetail | L200-40SH |



Polyurethane Coiled Hose



| Product Code | Size | Nitto # |
|--------------------------------------|------|---------|
| Nitto Coupling + Adaptor Ends | | |
| FNHC-0802 | 8mm | 2mts |
| FNHC-0804 | 8mm | 4mts |
| FNHC-0806 | 8mm | 6mts |
| FNHC-0808 | 8mm | 8mts |
| FNHC-1002 | 10mm | 2mts |
| FNHC-1004 | 10mm | 4mts |
| FNHC-1006 | 10mm | 6mts |
| FNHC-1008 | 10mm | 8mts |
| FNHC-1202 | 12mm | 2mts |
| FNHC-1204 | 12mm | 4mts |
| FNHC-1206 | 12mm | 6mts |
| FNHC-1208 | 12mm | 8mts |
| 1/4" Brass Male BSP Ends | | |
| FNHM-0802 | 8mm | 2mts |
| FNHM-0804 | 8mm | 4mts |
| FNHM-0806 | 8mm | 6mts |
| FNHM-0808 | 8mm | 8mts |
| FNHM-1002 | 10mm | 2mts |
| FNHM-1004 | 10mm | 4mts |
| FNHM-1006 | 10mm | 6mts |
| FNHM-1008 | 10mm | 8mts |
| FNHM-1202 | 12mm | 2mts |
| FNHM-1204 | 12mm | 4mts |
| FNHM-1206 | 12mm | 6mts |
| FNHM-1208 | 12mm | 8mts |



*Quality
Is NOT
Interchangeable!*

Jamec Coupling



| Product Code | Size |
|-------------------|---------------|
| 310 Series | |
| FJC-310F4 | 1/4" FBSP |
| FJC-310F6 | 3/8" FBSP |
| FJC-310F8 | 1/2" FBSP |
| | |
| FJC-310M4 | 1/4" MBSP |
| FJC-310M6 | 3/8" MBSP |
| FJC-310M8 | 1/2" MBSP |
| | |
| FJC-310T4 | 1/4" Hosetail |
| FJC-310T6 | 3/8" Hosetail |
| FJC-310T8 | 1/2" Hosetail |

| Product Code | Size |
|-------------------|-----------|
| 330 Series | |
| FJC-330F4 | 1/4" FBSP |
| FJC-330F6 | 3/8" FBSP |
| FJC-330F8 | 1/2" FBSP |
| | |
| FJC-330M4 | 1/4" MBSP |
| FJC-330M6 | 3/8" MBSP |
| FJC-330M8 | 1/2" MBSP |

Jamec Adaptor



| Product Code | Size |
|-------------------|---------------|
| 310 Series | |
| FJA-31F4 | 1/4" FBSP |
| FJA-31F6 | 3/8" FBSP |
| FJA-31F8 | 1/2" FBSP |
| | |
| FJA-31M4 | 1/4" MBSP |
| FJA-31M6 | 3/8" MBSP |
| FJA-31M8 | 1/2" MBSP |
| | |
| FJA-31T4 | 1/4" Hosetail |
| FJA-31T6 | 3/8" Hosetail |
| FJA-31T8 | 1/2" Hosetail |

| Product Code | Size |
|-------------------|---------------|
| 330 Series | |
| FJC-33F4 | 1/4" FBSP |
| FJC-33F6 | 3/8" FBSP |
| FJC-33F8 | 1/2" FBSP |
| | |
| FJC-33M4 | 1/4" MBSP |
| FJC-33M6 | 3/8" MBSP |
| FJC-33M8 | 1/2" MBSP |
| | |
| FJA-33T4 | 1/4" Hosetail |
| FJA-33T6 | 3/8" Hosetail |
| FJA-33T8 | 1/2" Hosetail |

310 Series

Max Working Pressure - 150psi
Flow 850 L/Min @ 100psi

330 Series

Max Working Pressure - 150psi
Flow 1870 L/Min @ 100psi

Ryco Coupling



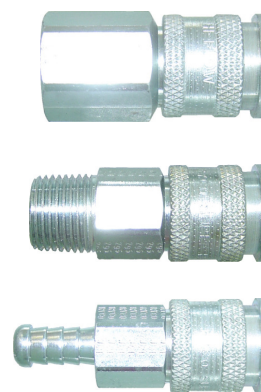
| Product Code | Size |
|-------------------|----------------------|
| 200 Series | |
| FRC-200F4 | 1/4" FBSP Brass |
| FRC-200F6 | 3/8" FBSP Brass |
| FRC-200M4 | 1/4" MBSP Brass |
| FRC-200M6 | 3/8" MBSP Brass |
| FRC-200T4 | 1/4" Hosetail Brass |
| FRC-200T5 | 5/16" Hosetail Brass |
| FRC-200T6 | 3/8" Hosetail Brass |

| Product Code | Size |
|-------------------|----------------------|
| 290 Series | |
| FRC-290F4 | 1/4" FBSP Steel |
| FRC-290F6 | 3/8" FBSP Steel |
| FRC-290F8 | 1/2" FBSP Steel |
| FRC-290M4 | 1/4" MBSP Steel |
| FRC-290M6 | 3/8" MBSP Steel |
| FRC-290M8 | 1/2" MBSP Steel |
| FRC-290T4 | 1/4" Hosetail Steel |
| FRC-290T5 | 5/16" Hosetail Steel |
| FRC-290T6 | 3/8" Hosetail Steel |
| FRC-290T8 | 1/2" Hosetail Steel |

Ryco Adaptor



| Product Code | Size |
|-------------------------|----------------------|
| 200 + 290 Series | |
| FRA-2F2 | 1/8" FBSP Brass |
| FRA-2F4 | 1/4" FBSP Brass |
| FRA-2F6 | 3/8" FBSP Steel |
| FRA-2F8 | 1/2" FBSP Steel |
| FRA-2M2 | 1/8" MBSP Brass |
| FRA-2M4 | 1/4" MBSP Brass |
| FRA-2M6 | 3/8" MBSP Steel |
| FRA-2M8 | 1/2" MBSP Steel |
| FRA-2T4 | 1/4" Hosetail Brass |
| FRA-2T5 | 5/16" Hosetail Brass |
| FRA-2T6 | 3/8" Hosetail Steel |
| FRA-2T8 | 1/2" Hosetail Steel |



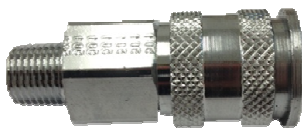
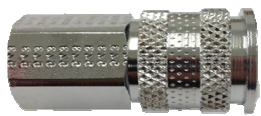
200 Series

Flow 1280 L/Min

290 Series

Flow 2500 L/Min

Ryco 500 Series



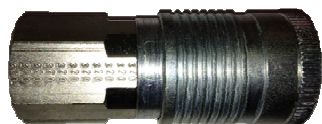
| Product Code | Size | Product Code | Size | Product Code | Size |
|--------------|-----------------|--------------|-----------------|--------------|-----------------|
| FRC-500F4 | 1/4" FBSP Steel | FRC-500M4 | 1/4" MBSP Steel | FRC-500T4 | 1/4" Tail Steel |
| FRC-500F6 | 3/8" FBSP Steel | FRC-500M6 | 3/8" MBSP Steel | FRC-500T6 | 3/8" Tail Steel |
| FRC-500F8 | 1/2" FBSP Steel | FRC-500M8 | 1/2" MBSP Steel | FRC-500T8 | 1/2" Tail Steel |



| Product Code | Size | Product Code | Size | Product Code | Size |
|--------------|-----------------|--------------|-----------------|--------------|-----------------|
| FRA-5F4 | 1/4" FBSP Steel | FRA-5M4 | 1/4" MBSP Steel | FRA-5T4 | 1/4" Tail Steel |
| FRA-5F6 | 3/8" FBSP Steel | FRA-5M6 | 3/8" MBSP Steel | FRA-5T6 | 3/8" Tail Steel |
| FRA-5F8 | 1/2" FBSP Steel | FRA-5M8 | 1/2" MBSP Steel | FRA-5T8 | 1/2" Tail Steel |

500 Series
Flow 2780 L/Min

Ryco 300 Series



| Product Code | Size | Product Code | Size | Product Code | Size |
|--------------|-----------------|--------------|-----------------|--------------|-----------------|
| FRC-300F4 | 1/4" FBSP Steel | FRC-300M4 | 1/4" MBSP Steel | FRA-300T4 | 1/4" Tail Steel |
| FRC-300F6 | 3/8" FBSP Steel | FRC-300M6 | 3/8" MBSP Steel | FRA-300T6 | 3/8" Tail Steel |



| Product Code | Size | Product Code | Size | Product Code | Size |
|--------------|-----------------|--------------|-----------------|--------------|-----------------|
| FRA-500F4 | 1/4" FBSP Steel | FRA-500F4 | 1/4" FBSP Steel | FRA-500F4 | 1/4" FBSP Steel |
| FRA-500F6 | 3/8" FBSP Steel | FRA-500F6 | 3/8" FBSP Steel | FRA-500F6 | 3/8" FBSP Steel |
| FRA-500F8 | 1/2" FBSP Steel | FRA-500F8 | 1/2" FBSP Steel | FRA-500F8 | 1/2" FBSP Steel |

300 Series
Flow 4700 L/Min

Straub Grip L



System Independence:
suitable for any pipe
material

Flexible pipe joint:
stress-free, compensates
for tolerances

Easy handling: low weight,
space-saving, no pipe-end
preparation or special
tools

No heat or fire hazard: can
be installed in fire-risk or
confined spaces

Damping properties:
noise, vibration, move-
ments

Economical: labour-saving
due to quick installation

Operating pressure up to
46 bar

Diameter 26.9 to 609.6
mm

Temperature range
-20c to +80c

| OD MM | Clamping Range | Product Code |
|----------|-------------------|-------------------|
| 26.9 | 26.4 - 27.4 | SPC-GL1-26.9-NBR |
| 30.0 | 29.5 - 30.5 | SPC-GL1-30.0-NBR |
| 33.7 | 33.2 - 34.2 | SPC-GL1-33.7-NBR |
| 38.0 | 37.5 - 38.5 | SPC-GL1-38.0-NBR |
| 42.4 | 41.9 - 42.9 | SPC-GL1-42.4-NBR |
| 44.5 | 44.0 - 45.0 | SPC-GL1-44.5-NBR |
| 48.3 | 47.8 - 48.8 | SPC-GL1-48.3-NBR |
| 54.0 | 53.5 - 54.5 | SPC-GL1-54.0-NBR |
| 57.0 | 56.4 - 57.6 | SPC-GL1-57.0-NBR |
| 60.3 | 59.7 - 60.9 | SPC-GL1-60.3-NBR |
| 66.6 | 64.9 - 67.3 | SPC-GL1-66.6-NBR |
| 70.0 | 68.9 - 70.7 | SPC-GL1-70.0-NBR |
| 73.0 | 72.3 - 73.7 | SPC-GL1-73.0-NBR |
| 76.1 | 75.3 - 76.9 | SPC-GL1-76.1-NBR |
| 79.5 | 78.7 - 80.3 | SPC-GL1-79.5-NBR |
| 84.0 | 83.2 - 84.8 | SPC-GL1-84.0-NBR |
| 88.9 | 88.0 - 89.8 | SPC-GL1-88.9-NBR |
| 100.6 | 99.6 - 101.6 | SPC-GL1-100.6-NBR |
| 101.6 | 100.6 - 102.6 | SPC-GL1-101.6-NBR |
| 104.8 | 103.8 - 105.8 | SPC-GL1-104.8-NBR |
| 108.0 | 106.9 - 109.1 | SPC-GL1-108.0-NBR |
| 114.3 | 113.2 - 115.4 | SPC-GL1-114.3-NBR |
| 127.0 | 125.7 - 128.3 | SPC-GL1-127.0-NBR |
| 133.0 | 131.7 - 134.3 | SPC-GL1-133.0-NBR |
| 139.7 | 138.3 - 141.1 | SPC-GL1-139.7-NBR |
| 141.3 | 139.9 - 142.7 | SPC-GL1-141.3-NBR |
| 154.0 | 152.5 - 155.5 | SPC-GL1-154.0-NBR |
| 168.3 | 166.6 - 170.0 | SPC-GL1-168.3-NBR |
| 219.1 | 216.9 - 221.3 | SPC-GL1-219.1-NBR |